

90° HYBRID

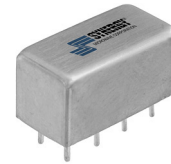
PLUG-IN MODEL: DQP-50-250

FREQUENCY BANDWIDTH

50 - 250 MHz

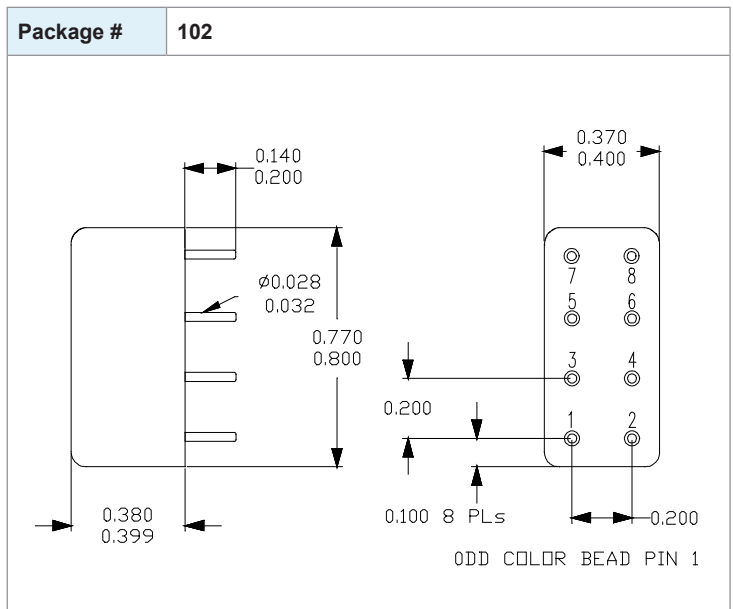
FEATURES:

- ▶ Wide Bandwidth (5:1)
- ▶ Small Package Size
- ▶ Building Block For:
 - Power Amplifiers
 - Image Rejection Mixers
 - I & Q / SSB Modulators
 - Phase Shifters & More...



SPECIFICATIONS

Frequency	50 - 250 MHz	
Insertion Loss (dB) *	Typ.	Max.
	1.6	2.2
Amplitude Unbalance (dB)	Typ.	Max.
	1.0	1.5
Phase Unbalance (Deg.)	Typ.	Max.
	5.0	6.0
Isolation (dB)	Typ.	Min.
	25	18
Input Power	1 Watt (Max.)	
Impedance	50 Ohms (Nom.)	
VSWR	1.35:1 (Typ.)	
Operating Temperature Range	-40 to +85 °C	
* Insertion loss in excess of the theoretical 3 dB coupling.		



PORT CONFIGURATION

Input	Isolated*	+90° Output	0° Output	GND
1	2	8	7	All Others

* Terminate ISOLATED port with 50 Ohms.

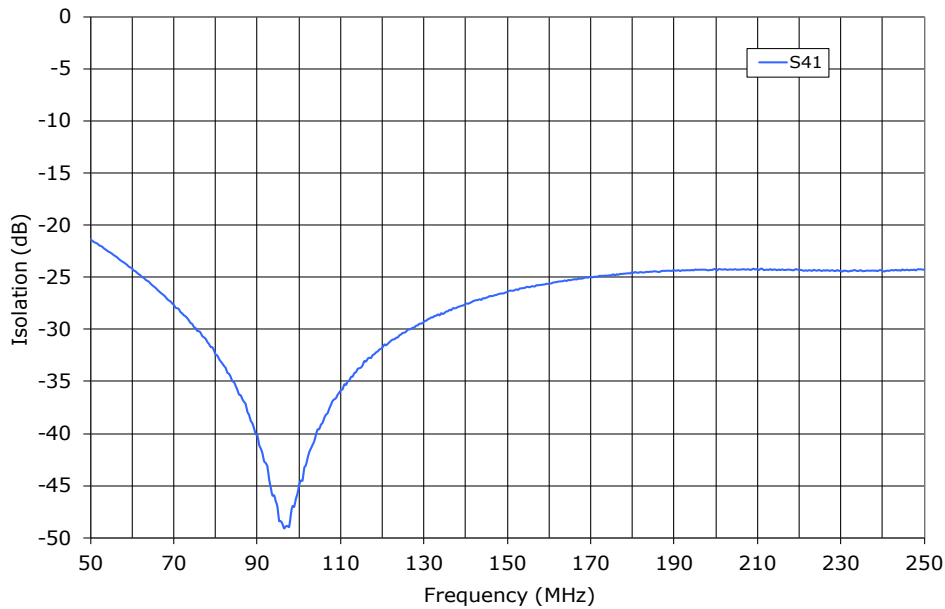
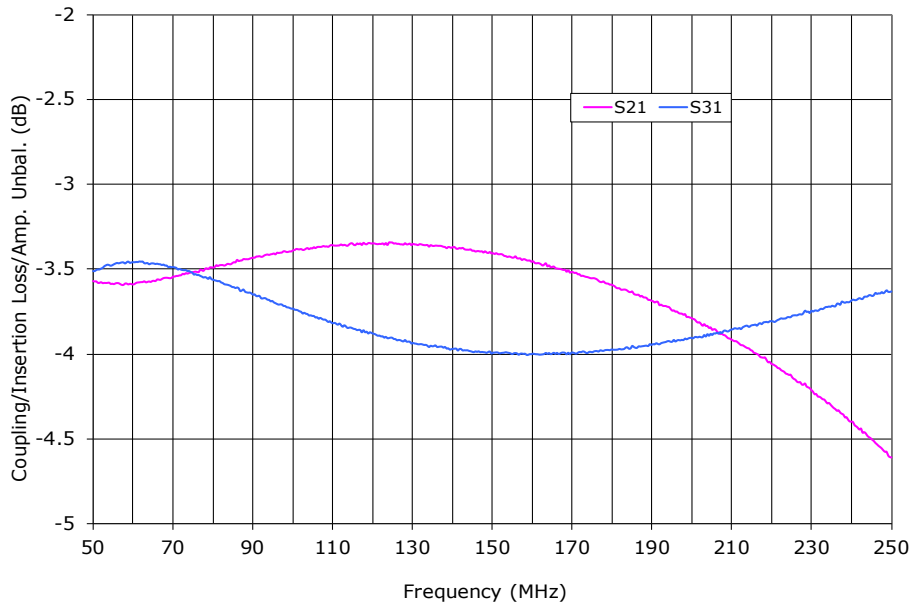
90° HYBRID

PLUG-IN MODEL: DQP-50-250

FREQUENCY BANDWIDTH

50 - 250 MHz

Data @ 25°C



PERFORMANCE PLOTS

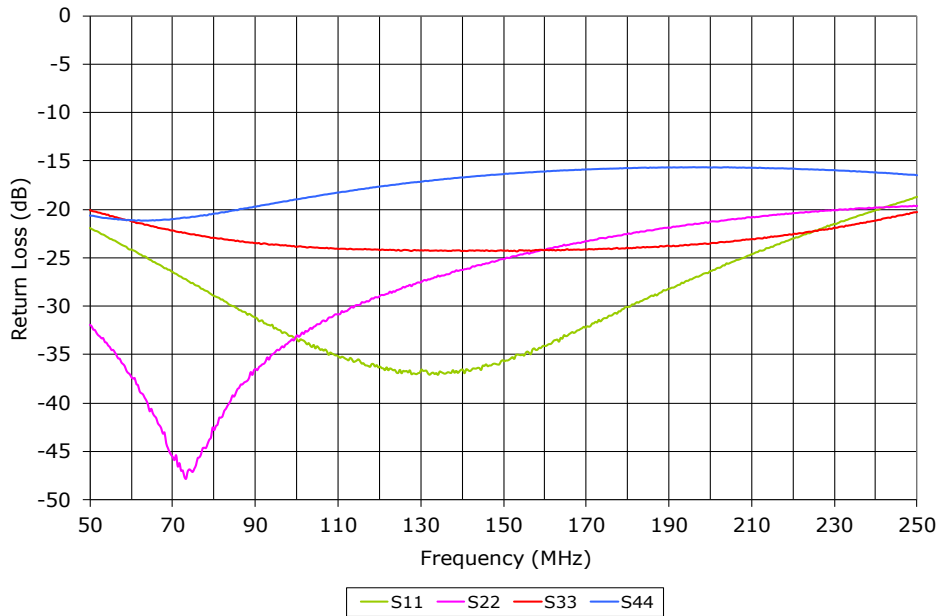
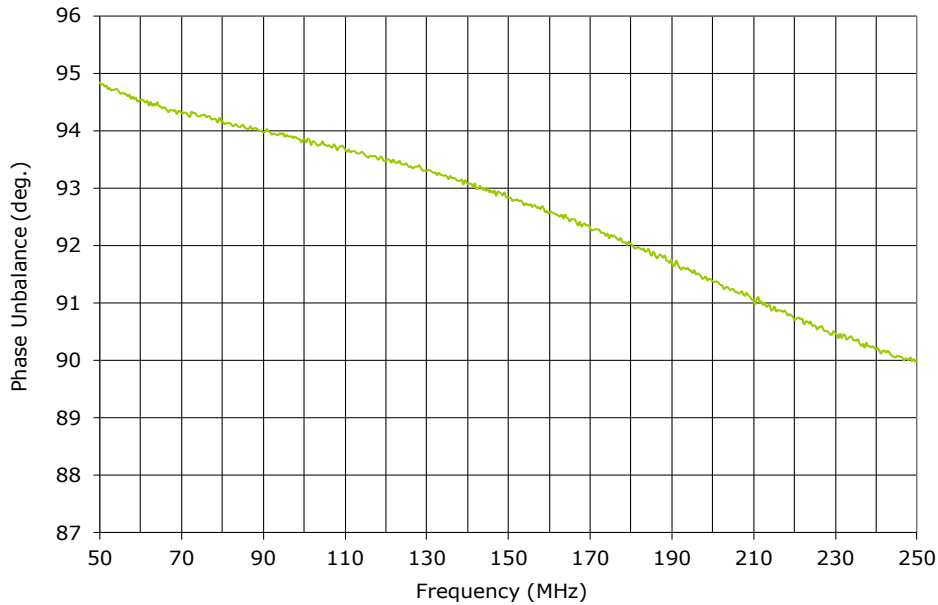
90° HYBRID

PLUG-IN MODEL: DQP-50-250

FREQUENCY BANDWIDTH

50 - 250 MHz

Data @ 25°C



PERFORMANCE PLOTS